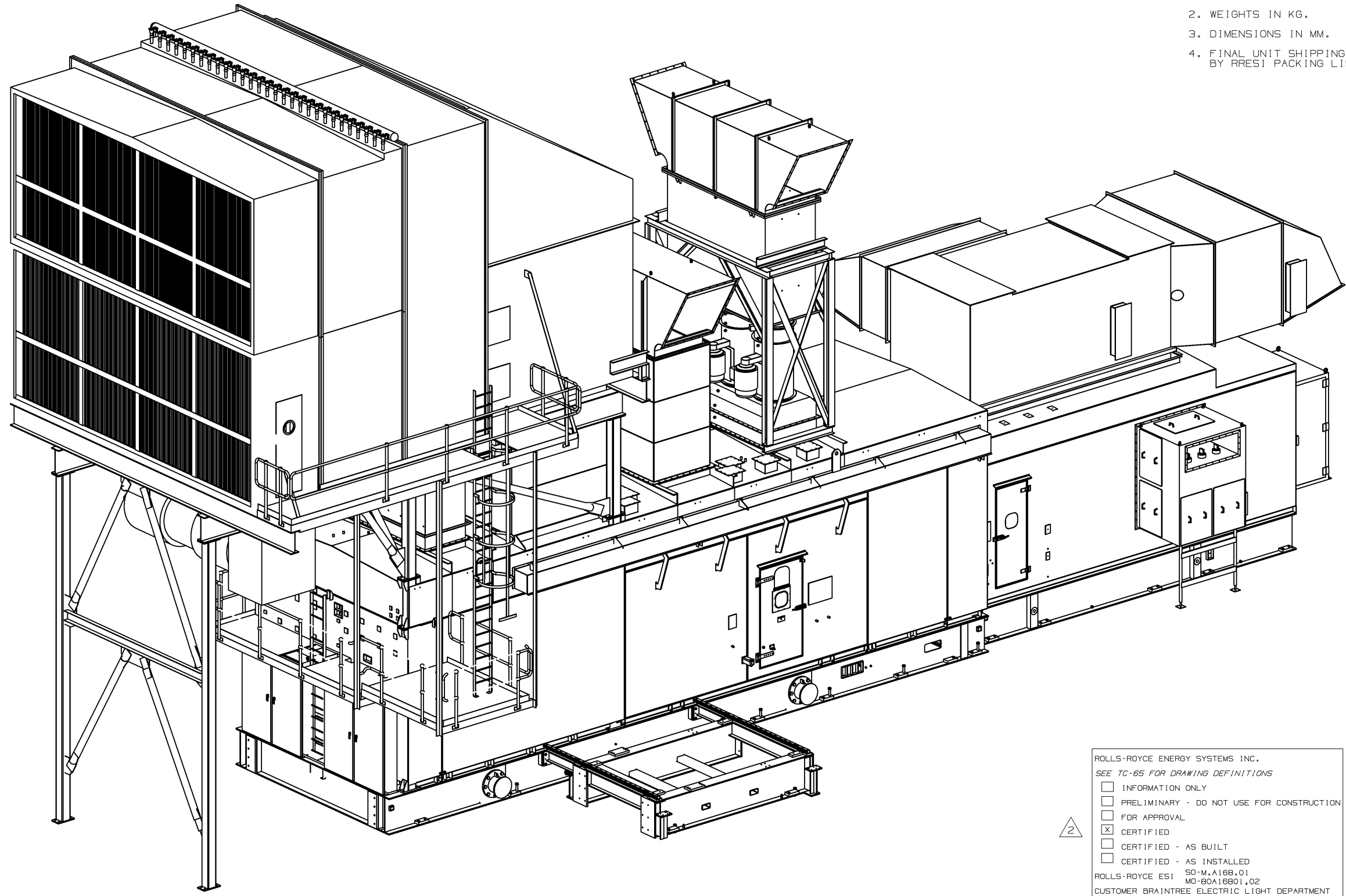


12 11 10 9 8 7 6 5 4 3 2 1

H
G
F
E
D
C
B
A

H
G
F
E
D
C
B
A

- NOTES
1. ALL APPROXIMATE WEIGHTS, LENGTHS, WIDTHS AND HEIGHTS ARE FOR EQUIPMENT ONLY AND DO NOT INCLUDE SHIPPING CONTAINERS.
 2. WEIGHTS IN KG.
 3. DIMENSIONS IN MM.
 4. FINAL UNIT SHIPPING CONFIGURATION IS DEFINED BY RRESI PACKING LISTS AND IS SUBJECT THE CHANGE.



ROLLS-ROYCE ENERGY SYSTEMS INC.
SEE TC-65 FOR DRAWING DEFINITIONS

- INFORMATION ONLY
- PRELIMINARY - DO NOT USE FOR CONSTRUCTION
- FOR APPROVAL
- CERTIFIED
- CERTIFIED - AS BUILT
- CERTIFIED - AS INSTALLED

ROLLS-ROYCE EST 50-M.A168.01
MO-80A16801.02
CUSTOMER BRAINTREE ELECTRIC LIGHT DEPARTMENT
P.O. NO. 4500001296

REFER TO DOCUMENT TRANSMITTAL LETTER FOR SPECIFIC INSTRUCTIONS



UNIGRAPHICS DRAWING
STANDARD PRODUCT
 YES, SEE TA-78-2 NO

THIRD ANGLE PROJECTION

©ROLLS-ROYCE PLC 2003
THE INFORMATION IN THIS DOCUMENT IS THE PROPERTY OF ROLLS-ROYCE PLC AND MAY NOT BE COPIED, COMMUNICATED TO A THIRD PARTY, OR USED FOR ANY PURPOSE OTHER THAN FOR WHICH IT IS SUPPLIED, WITHOUT THE EXPRESS WRITTEN CONSENT OF ROLLS-ROYCE PLC.

ENGR. 2: PPH
ENGR. 1: NC
APPR. BY: REJ
CHKD. BY: KDR
DRAWN BY: KDR
DWG. DATE: 07FEB07

2	22887.04 WAS PRELIMINARY	21SEP07 TRH
1	22887.04 RELEASE AS CERTIFIED	27JUL07 MHB
0	22037.04 INITIAL RELEASE	07FEB07 KDR
REV NO	ECO NO / DESCRIPTION	DATE
REVISION HISTORY		
ISSUE	M.A168.01	80A16801.02

Rolls-Royce

ROLLS-ROYCE ENERGY SYSTEMS INC. MOUNT VERNON OHIO 43050 USA
ROLLS-ROYCE POWER ENGINEERING PLC BOULLE, MERSEYSIDE L30 4UZ ENGLAND

SHIPPING & ONSITE
INSTALLATION ASSY - WLE

SIZE A1 GED00008875 REV 2

SCALE: NTS SHEET: 1 OF: 9

12 11 10 9 8 7 6 5 4 3 2 1

ALL SHEETS ARE THE SAME REVISION STATUS.

12 11 10 9 8 7 6 5 4 3 2 1

H
G
F
E
D
C
B
A

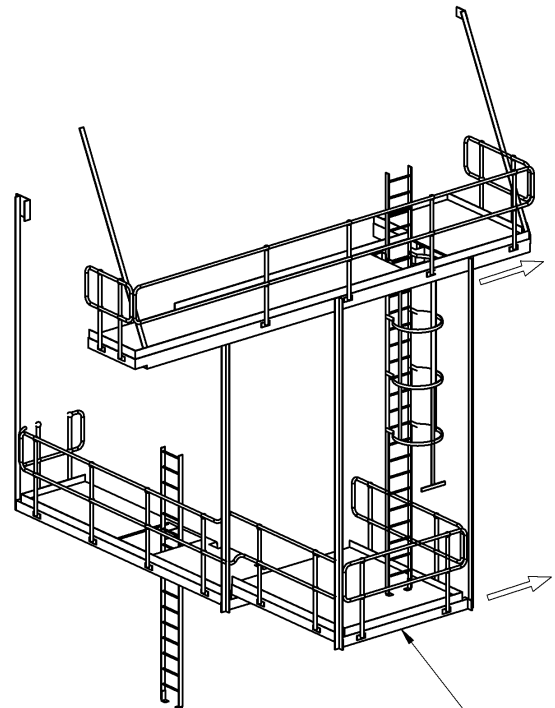
H
G
F
E
D
C
B
A

COMBUSTION & VENTILATION INLET FILTERS
*SEE SHT.3

G.T. BLEED VALVE PLENUM
*SEE SHT.3

G.T. VENTILATION AIR OUTLET
*SEE SHT.3

- NOTES
- INDICATES LIFTING POINT.
 - CROSS BRACING IN G.T. SKID IS REMOVED FOR SHIPPING.



ACCESS PLATFORMS
*SEE SHT.4

EXHAUST TRANSITION (REFERENCE GEM 0051) (SHIP LOOSE)
WEIGHT : 1978 Kg
LENGTH : 1690
WIDTH : 2921
HEIGHT : 3461
LIFTING LUG ID : Ø57

G.T. BASE MODULE AND ENCLOSURE
WEIGHT : 73,520 Kg
LENGTH : 14,500
WIDTH : 4700
HEIGHT : 3642

G.T. MECHANICAL HANDLING SKID
WEIGHT : 2874 Kg
LENGTH : 3970
WIDTH : 2967
HEIGHT : 855

2	22887.04 UPDATED PER LATEST INFO	21SEP07
REV NO	ECO NO / DESCRIPTION	DATE
REVISION HISTORY		
ISSUE	M.A168.01	80A16801.02



THIRD ANGLE PROJECTION

©ROLLS-ROYCE PLC 2003
THE INFORMATION IN THIS DOCUMENT IS THE PROPERTY OF ROLLS-ROYCE PLC AND MAY NOT BE COPIED, COMMUNICATED TO A THIRD PARTY, OR USED FOR ANY PURPOSE OTHER THAN FOR WHICH IT IS SUPPLIED, WITHOUT THE EXPRESS WRITTEN CONSENT OF ROLLS-ROYCE PLC.

UNIGRAPHICS DRAWING
STANDARD PRODUCT
 YES, SEE TA-78-2 NO

ENGR. 2: PPH
APPR. 1: NC
CHKD. BY: REJ
DRAWN BY: KDR
DWG. DATE: 07FEB07

ROLLS-ROYCE ENERGY SYSTEMS INC. MOUNT VERNON OHIO 43050 USA
ROLLS-ROYCE POWER ENGINEERING PLC BOULLE, MERSEYSIDE L30 4UZ ENGLAND

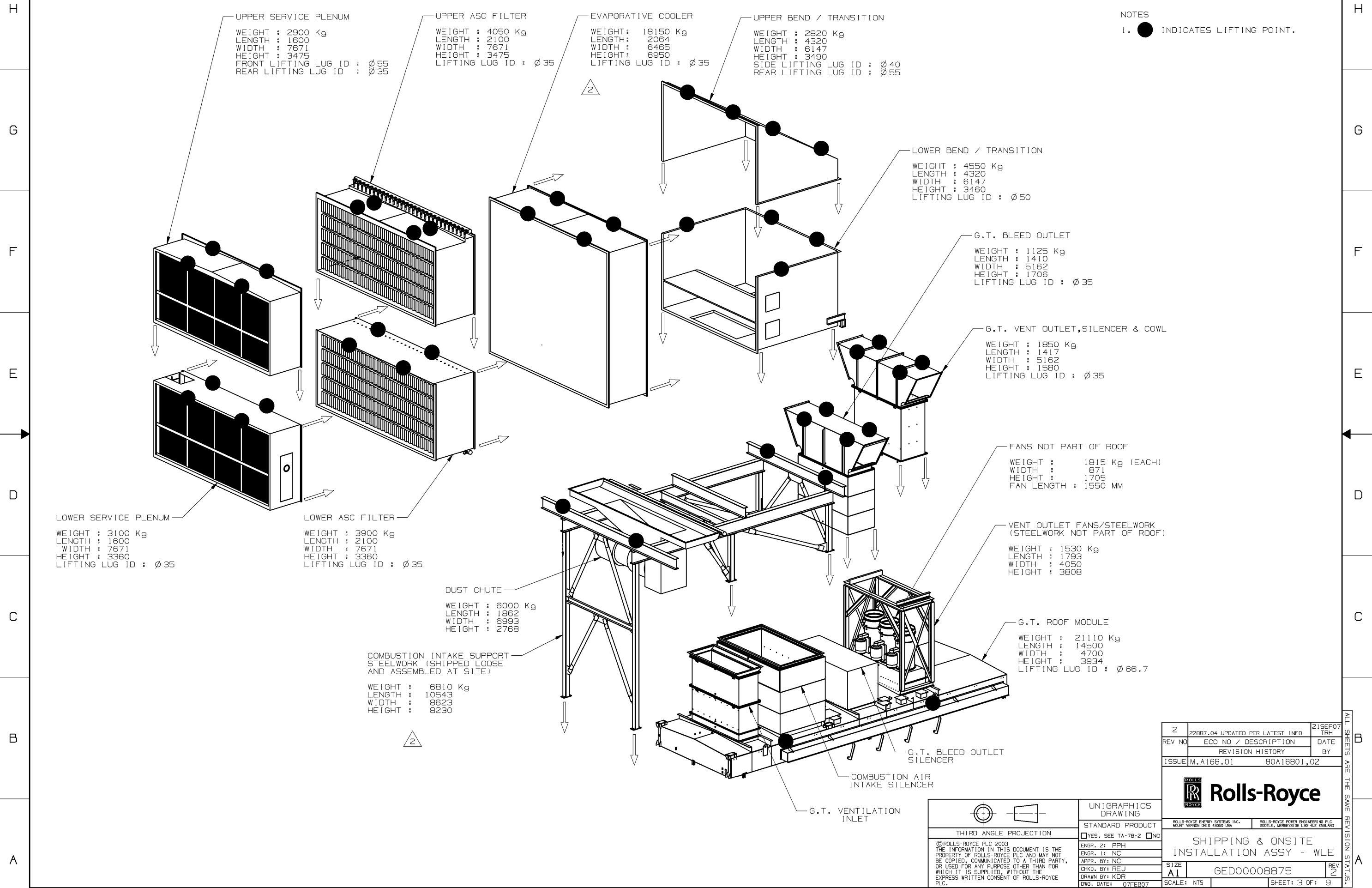
SHIPPING & ONSITE INSTALLATION ASSY - WLE

SIZE A1 GED00008875 REV 2
SCALE: NTS SHEET: 2 OF: 9

12 11 10 9 8 7 6 5 4 3 2 1

ALL SHEETS ARE THE SAME REVISION STATUS.

12 11 10 9 8 7 6 5 4 3 2 1



NOTES
 1. ● INDICATES LIFTING POINT.

Z	22887.04 UPDATED PER LATEST INFO	21SEP07
REV NO	ECO NO / DESCRIPTION	DATE
REVISION HISTORY		BY
ISSUE	M.A168.01	80A16801.02

Rolls-Royce

SHIPPING & ONSITE
 INSTALLATION ASSY - WLE

SIZE: A1 GED00008875 REV: 2

SCALE: NTS SHEET: 3 OF: 9

UNIGRAPHICS DRAWING
 STANDARD PRODUCT
 YES, SEE TA-78-2 NO

THIRD ANGLE PROJECTION

©ROLLS-ROYCE PLC 2003
 THE INFORMATION IN THIS DOCUMENT IS THE PROPERTY OF ROLLS-ROYCE PLC AND MAY NOT BE COPIED, COMMUNICATED TO A THIRD PARTY, OR USED FOR ANY PURPOSE OTHER THAN FOR WHICH IT IS SUPPLIED, WITHOUT THE EXPRESS WRITTEN CONSENT OF ROLLS-ROYCE PLC.

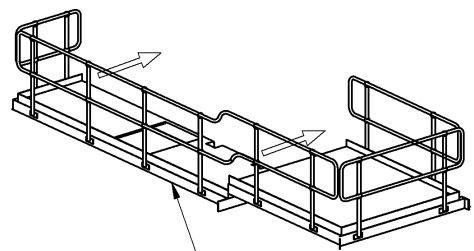
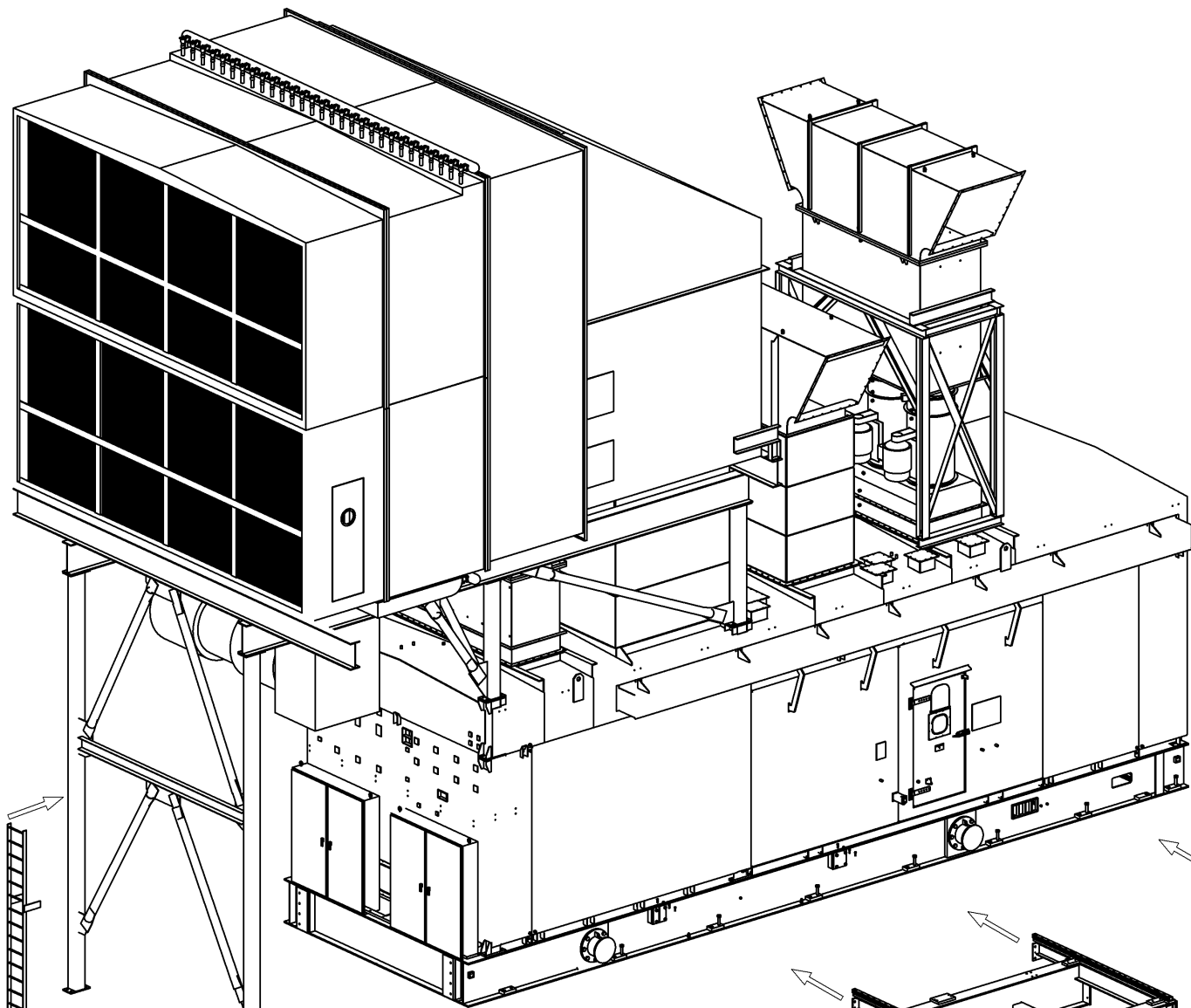
ENGR. 2: PPH
 ENGR. 1: NC
 APPR. BY: REJ
 CHKD. BY: KDR
 DWN BY: KDR
 DWG. DATE: 07FEB07

ALL SHEETS ARE THE SAME REVISION STATUS.

12 11 10 9 8 7 6 5 4 3 2 1

12 11 10 9 8 7 6 5 4 3 2 1

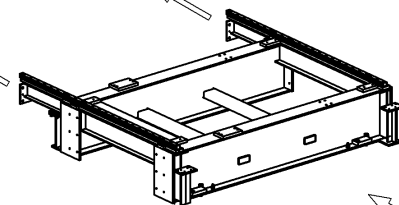
H
G
F
E
D
C
B
A



ENCLOSURE ACCESS PLATFORM
 WEIGHT : 1500 Kg
 LENGTH : 7081
 WIDTH : 2350
 HEIGHT : 1500



ENCLOSURE LADDER
 WEIGHT : 100 Kg
 LENGTH : 350
 WIDTH : 400
 HEIGHT : 3850



AIR INLET LADDER
 WEIGHT : 200 Kg
 LENGTH : 810
 WIDTH : 710
 HEIGHT : 6420



AIR INLET FILTER HOUSING ACCESS PLATFORM
 WEIGHT : 1000 Kg
 LENGTH : 5205
 WIDTH : 1575
 HEIGHT : 1320

THIRD ANGLE PROJECTION
 ©ROLLS-ROYCE PLC 2003
 THE INFORMATION IN THIS DOCUMENT IS THE PROPERTY OF ROLLS-ROYCE PLC AND MAY NOT BE COPIED, COMMUNICATED TO A THIRD PARTY, OR USED FOR ANY PURPOSE OTHER THAN FOR WHICH IT IS SUPPLIED, WITHOUT THE EXPRESS WRITTEN CONSENT OF ROLLS-ROYCE PLC.

UNIGRAPHICS DRAWING
 STANDARD PRODUCT
 YES, SEE TA-78-2 NO
 ENGR. 2: PPH
 ENGR. 1: NC
 APPR. BY: REJ
 CHKD. BY: KDR
 DRAWN BY: KDR
 DWG. DATE: 07FEB07

REV NO	ECO NO / DESCRIPTION	DATE
REVISION HISTORY		
ISSUE	M.A168.01	80A16801.02



ROLLS-ROYCE ENERGY SYSTEMS INC. MOUNT VERNON OHIO 43050 USA
 ROLLS-ROYCE POWER ENGINEERING PLC BOULLE, MERSEYSIDE L30 4UZ ENGLAND

SHIPPING & ONSITE INSTALLATION ASSY - WLE

SIZE	A1	REV	2
GED00008875		SHEET: 4 OF: 9	

12 11 10 9 8 7 6 5 4 3 2 1

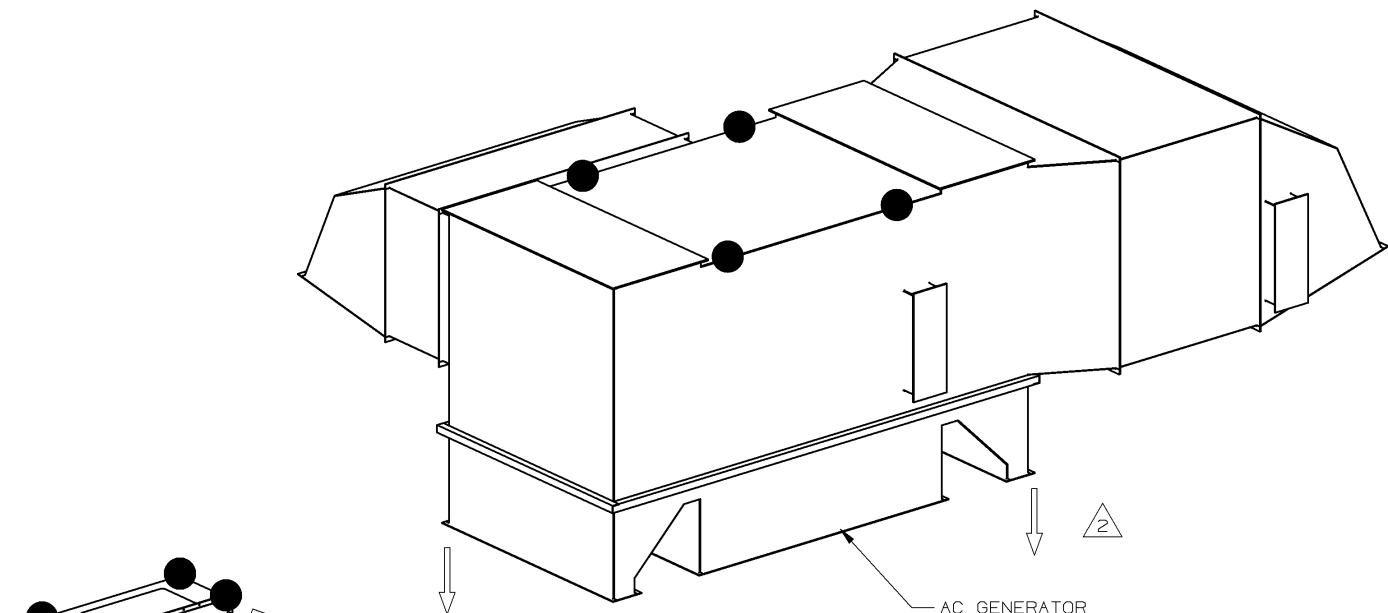
ALL SHEETS ARE THE SAME REVISION STATUS.

12 11 10 9 8 7 6 5 4 3 2 1

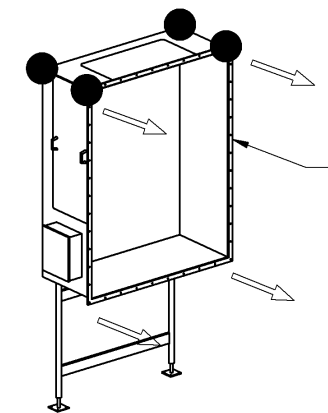
H
G
F
E
D
C
B
A

H
G
F
E
D
C
B
A

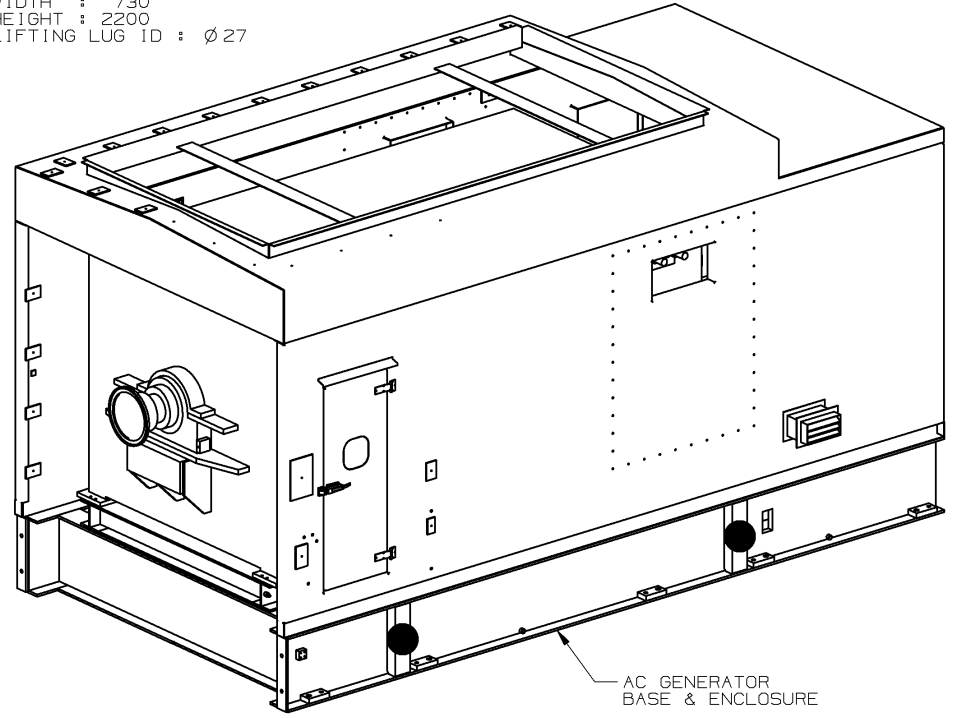
NOTES
1. ● INDICATES LIFTING POINT.



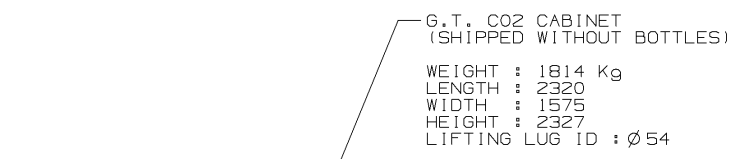
AC GENERATOR VENT SYSTEM
WEIGHT : 10100 Kg
LENGTH : 9029
WIDTH : 6538
HEIGHT : 3248
LIFTING LUG ID : $\varnothing 66.7$



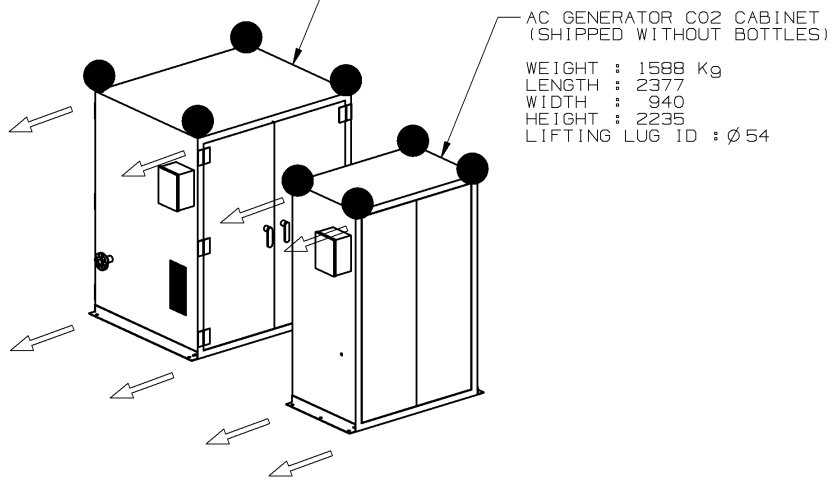
NEUTRAL CUBICAL
WEIGHT : 900 Kg
LENGTH : 2092
WIDTH : 730
HEIGHT : 2200
LIFTING LUG ID : $\varnothing 27$



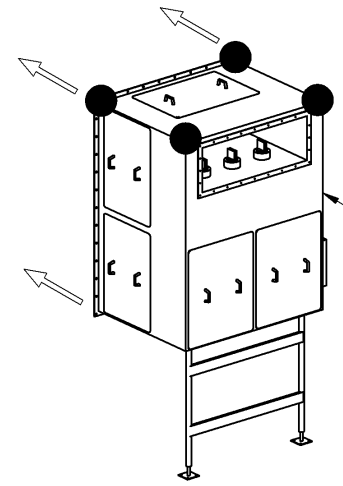
AC GENERATOR BASE & ENCLOSURE
WEIGHT : 108200 Kg
LENGTH : 7997
WIDTH : 4000
HEIGHT : 3732



G.T. CO2 CABINET (SHIPPED WITHOUT BOTTLES)
WEIGHT : 1814 Kg
LENGTH : 2320
WIDTH : 1575
HEIGHT : 2327
LIFTING LUG ID : $\varnothing 54$



AC GENERATOR CO2 CABINET (SHIPPED WITHOUT BOTTLES)
WEIGHT : 1588 Kg
LENGTH : 2377
WIDTH : 940
HEIGHT : 2235
LIFTING LUG ID : $\varnothing 54$



LINE CUBICAL
WEIGHT : 1650 Kg
LENGTH : 2018
WIDTH : 1310
HEIGHT : 2200
LIFTING LUG ID : $\varnothing 27$

THIRD ANGLE PROJECTION
©ROLLS-ROYCE PLC 2003
THE INFORMATION IN THIS DOCUMENT IS THE PROPERTY OF ROLLS-ROYCE PLC AND MAY NOT BE COPIED, COMMUNICATED TO A THIRD PARTY, OR USED FOR ANY PURPOSE OTHER THAN FOR WHICH IT IS SUPPLIED, WITHOUT THE EXPRESS WRITTEN CONSENT OF ROLLS-ROYCE PLC.

UNIGRAPHICS DRAWING
STANDARD PRODUCT
 YES, SEE TA-78-2 NO
ENGR. 2: PPH
ENGR. 1: NC
APPR. BY: NC
CHKD. BY: REJ
DRAWN BY: KDR
DWG. DATE: 07FEB07

Z	22887.04 UPDATED PER LATEST INFO	21SEP07
REV NO	ECO NO / DESCRIPTION	DATE
REVISION HISTORY		
ISSUE	M.A168.01	80A16801.02

Rolls-Royce

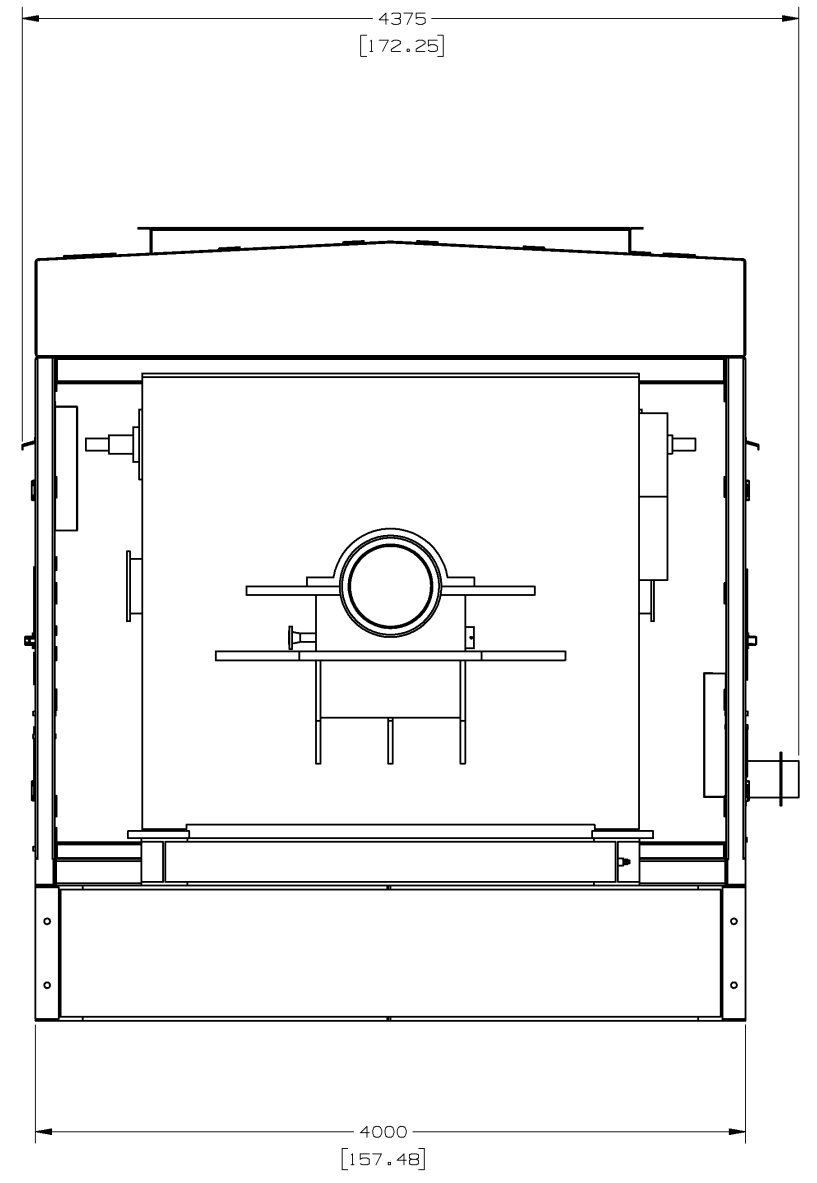
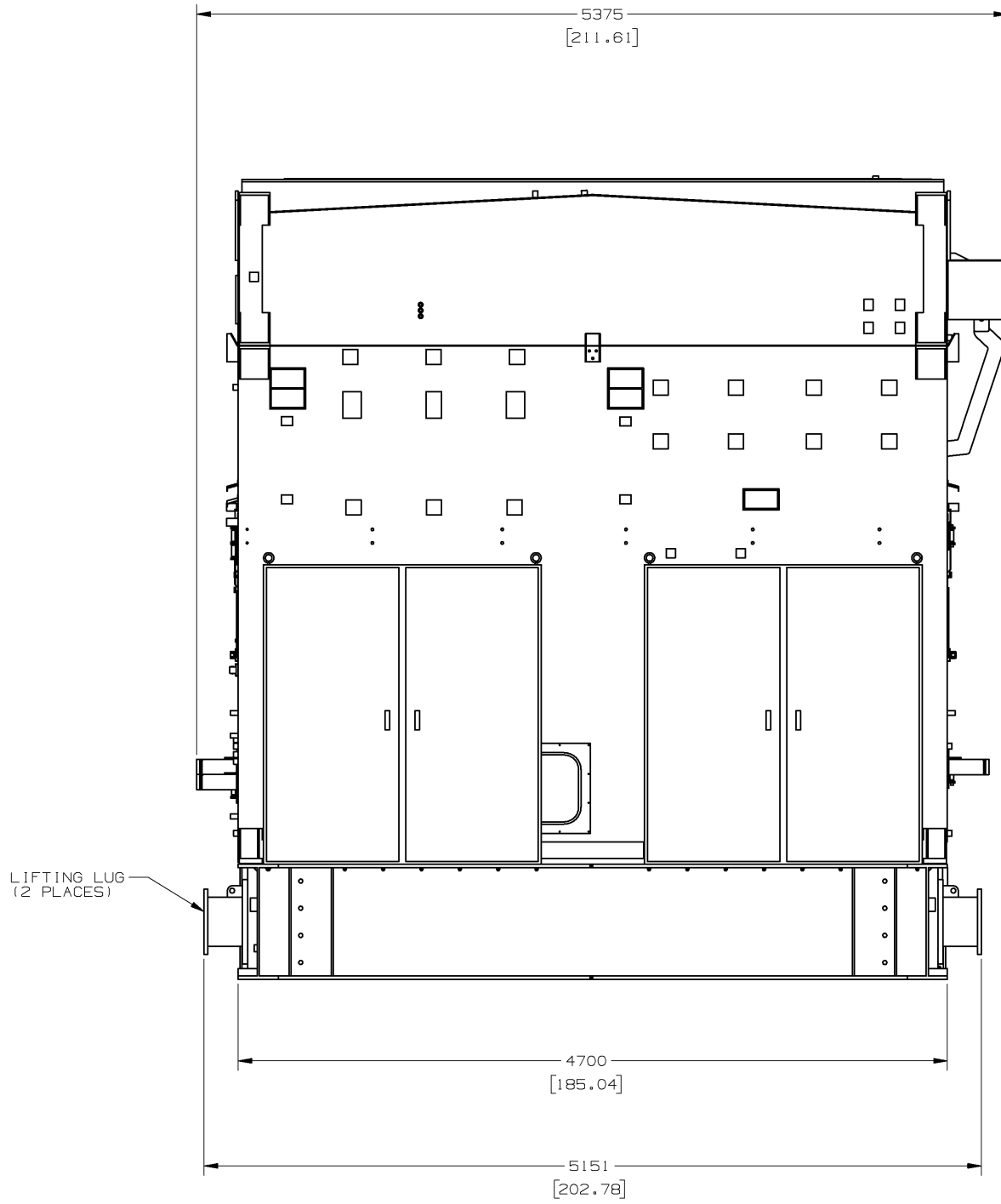
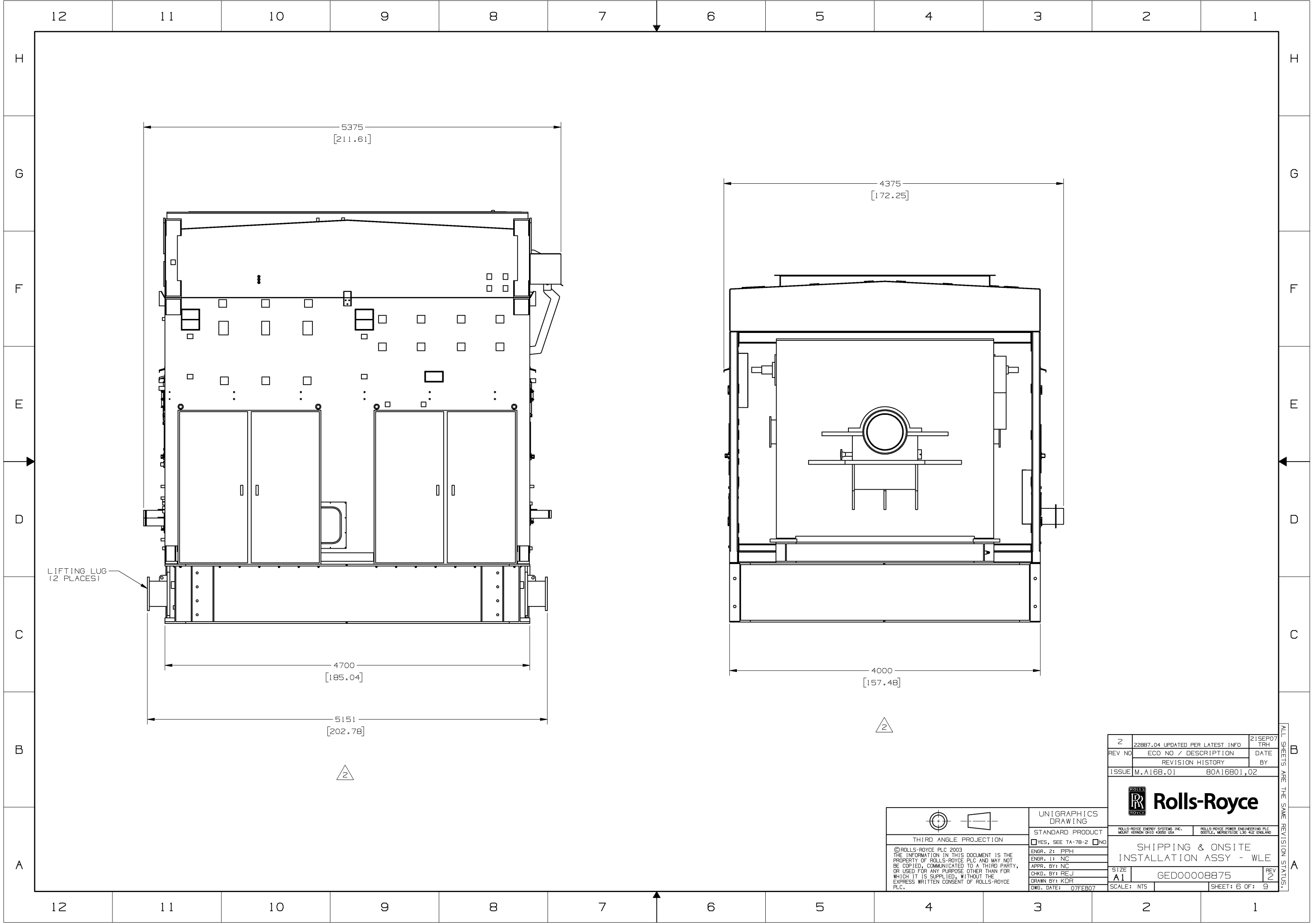
ROLLS-ROYCE ENERGY SYSTEMS INC. MOUNT VERNON OHIO 43050 USA
ROLLS-ROYCE POWER ENGINEERING PLC BOULTON, MERSEYSIDE L30 4UZ ENGLAND

SHIPPING & ONSITE INSTALLATION ASSY - WLE

SIZE	A1	REV	2
SCALE:	NTS	SHEET:	5 OF 9

12 11 10 9 8 7 6 5 4 3 2 1

ALL SHEETS ARE THE SAME REVISION STATUS.



Z	22887.04 UPDATED PER LATEST INFO	21SEP07
REV NO	ECO NO / DESCRIPTION	DATE
REVISION HISTORY		
ISSUE	M.A168.01	80A16801.02

Rolls-Royce

ROLLS-ROYCE ENERGY SYSTEMS INC.
MOUNT VERNON OHIO 43050 USA

ROLLS-ROYCE POWER ENGINEERING PLC
BOULLE, MERSEYSIDE L30 4UZ ENGLAND

SHIPPING & ONSITE
INSTALLATION ASSY - WLE

SIZE: A1 GED00008875 REV: 2

SCALE: NTS SHEET: 6 OF: 9

UNIGRAPHICS
DRAWING

STANDARD PRODUCT
 YES, SEE TA-78-2 NO

THIRD ANGLE PROJECTION

©ROLLS-ROYCE PLC 2003
THE INFORMATION IN THIS DOCUMENT IS THE PROPERTY OF ROLLS-ROYCE PLC AND MAY NOT BE COPIED, COMMUNICATED TO A THIRD PARTY, OR USED FOR ANY PURPOSE OTHER THAN FOR WHICH IT IS SUPPLIED, WITHOUT THE EXPRESS WRITTEN CONSENT OF ROLLS-ROYCE PLC.

ENGR. 2: PPH
ENGR. 1: NC
APPR. BY: NC
CHKD. BY: REJ
DRAWN BY: KDR
DWG. DATE: 07FEB07

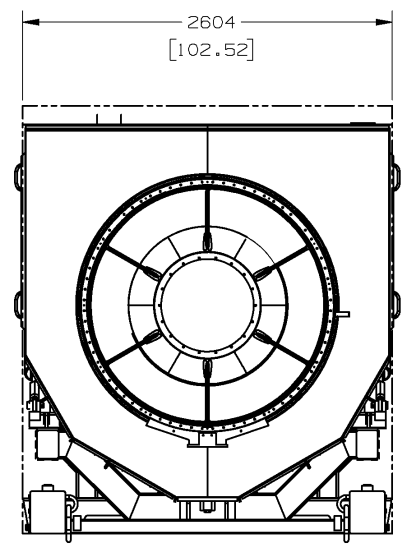
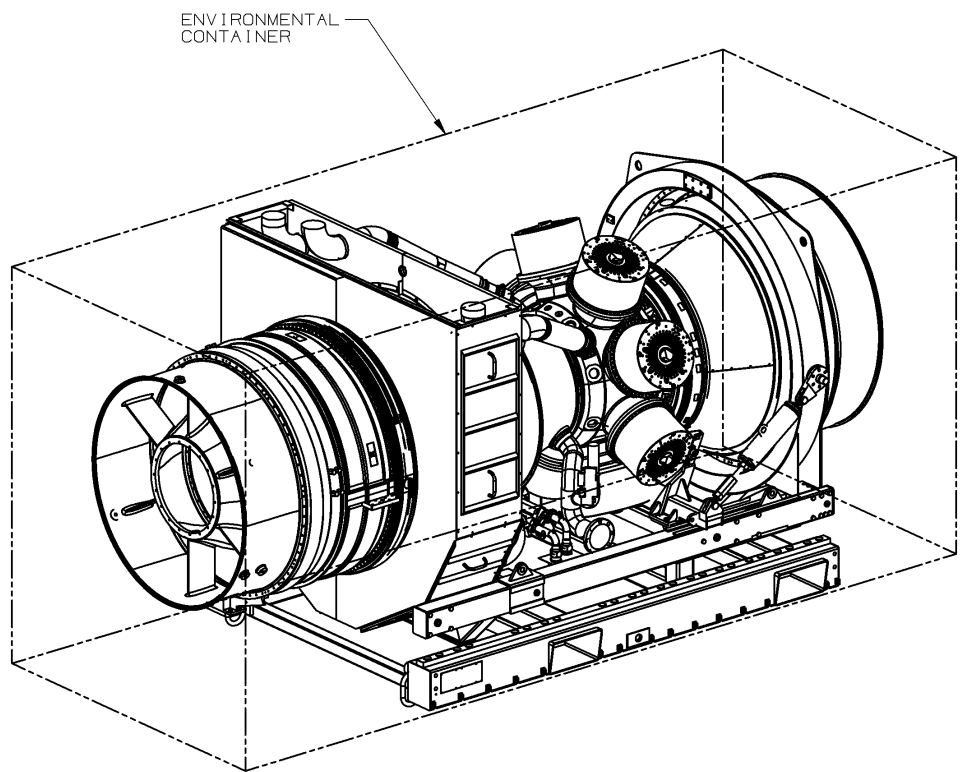
ALL SHEETS ARE THE SAME REVISION STATUS.

12 11 10 9 8 7 6 5 4 3 2 1

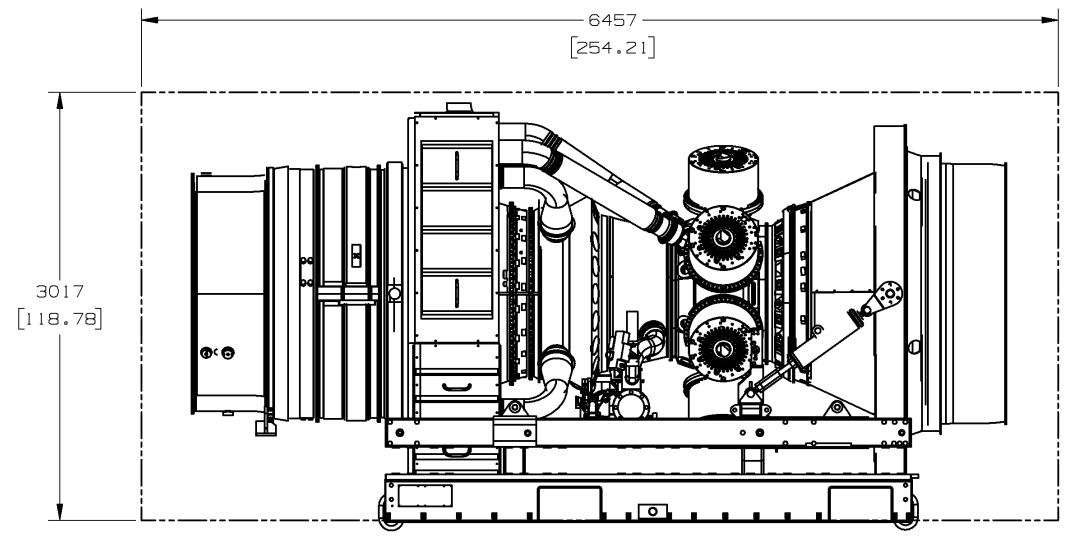
H
G
F
E
D
C
B
A

H
G
F
E
D
C
B
A

- NOTES:
1. STANDARD OFF-SKID ITEMS IN CONTAINERS
QTY : TBD.
 2. FOR ENGINE LIFTING REFERENCE TAMR04.



ENVIRONMENTAL CONTAINER
FRONT VIEW



ENVIRONMENTAL CONTAINER
RIGHT SIDE VIEW

TRENT ENGINE &
TRANSPORTATION STAND
(FP WLE)

WEIGHT : 13440 Kg
LENGTH : 6457
WIDTH : 2604
HEIGHT : 3017



2	22887.04 UPDATED PER LATEST INFO	21SEP07
REV NO	ECO NO / DESCRIPTION	DATE
REVISION HISTORY		
ISSUE	M.A168.01	80A16801.02



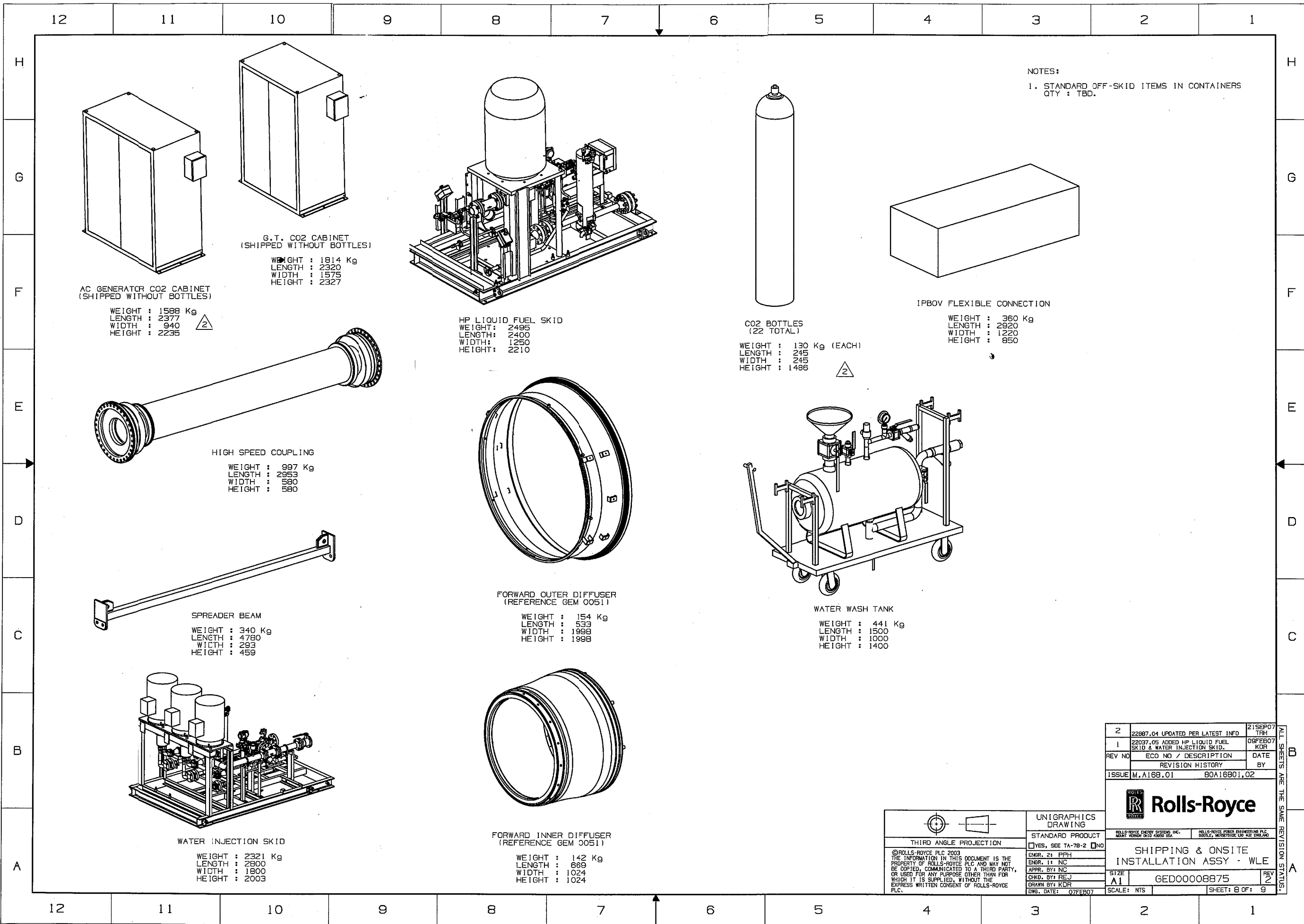
<p>THIRD ANGLE PROJECTION</p>	<p>UNIGRAPHICS DRAWING</p> <p>STANDARD PRODUCT</p> <p><input type="checkbox"/> YES, SEE TA-78-2 <input type="checkbox"/> NO</p> <p>ENGR. 2: PPH ENGR. 1: NC APPR. BY: NC CHKD. BY: REJ DRAWN BY: KDR DWG. DATE: 07FEB07</p>
-------------------------------	---

<p>ROLLS-ROYCE ENERGY SYSTEMS INC. MOUNT VERNON OHIO 43050 USA</p>		<p>ROLLS-ROYCE POWER ENGINEERING PLC BOULTON, MERSEYSIDE L30 4JZ ENGLAND</p>	
<p>SHIPPING & ONSITE INSTALLATION ASSY - WLE</p>			
SIZE	A1	REV	2
SCALE: NTS		SHEET: 7 OF: 9	

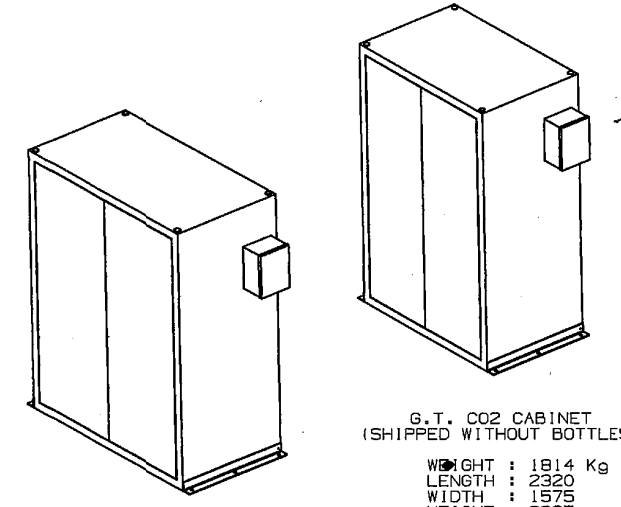
©ROLLS-ROYCE PLC 2003
THE INFORMATION IN THIS DOCUMENT IS THE
PROPERTY OF ROLLS-ROYCE PLC AND MAY NOT
BE COPIED, COMMUNICATED TO A THIRD PARTY,
OR USED FOR ANY PURPOSE OTHER THAN FOR
WHICH IT IS SUPPLIED, WITHOUT THE
EXPRESS WRITTEN CONSENT OF ROLLS-ROYCE
PLC.

12 11 10 9 8 7 6 5 4 3 2 1

ALL SHEETS ARE THE SAME REVISION STATUS.

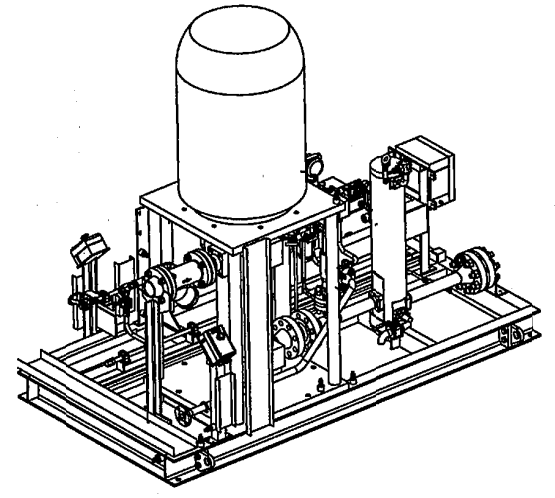


NOTES:
1. STANDARD OFF-SKID ITEMS IN CONTAINERS
QTY : TBD.

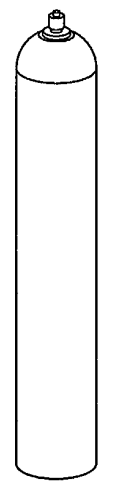


**AC GENERATOR CO2 CABINET
(SHIPPED WITHOUT BOTTLES)**
WEIGHT : 1588 Kg
LENGTH : 2377
WIDTH : 940
HEIGHT : 2235

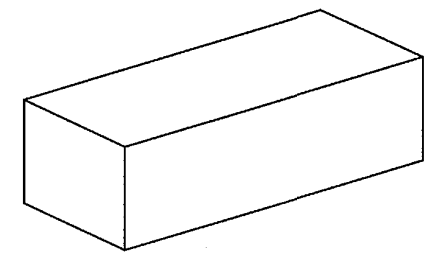
**G.T. CO2 CABINET
(SHIPPED WITHOUT BOTTLES)**
WEIGHT : 1814 Kg
LENGTH : 2320
WIDTH : 1575
HEIGHT : 2327



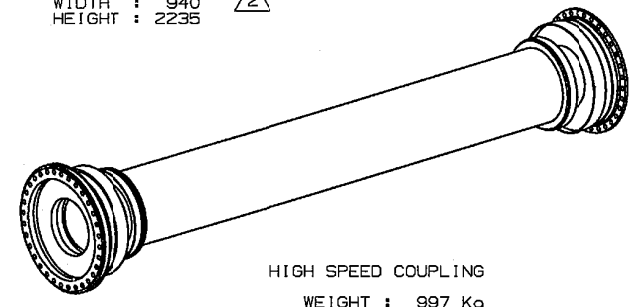
HP LIQUID FUEL SKID
WEIGHT: 2495
LENGTH: 2400
WIDTH: 1250
HEIGHT: 2210



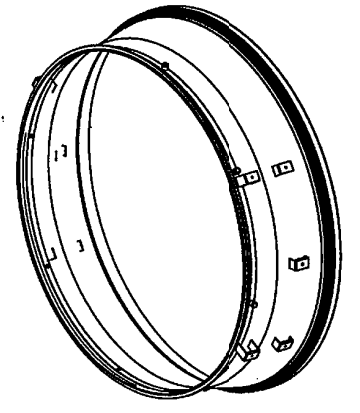
**CO2 BOTTLES
(22 TOTAL)**
WEIGHT : 130 Kg (EACH)
LENGTH : 245
WIDTH : 245
HEIGHT : 1486



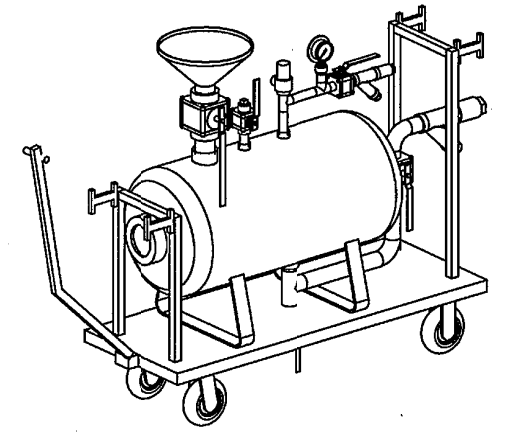
IPBOV FLEXIBLE CONNECTION
WEIGHT : 360 Kg
LENGTH : 2920
WIDTH : 1220
HEIGHT : 850



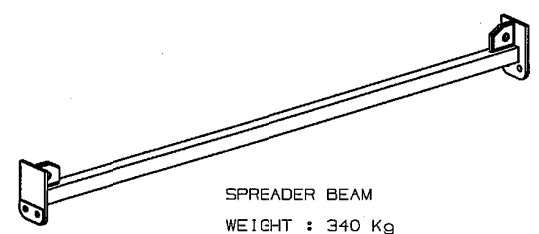
HIGH SPEED COUPLING
WEIGHT : 997 Kg
LENGTH : 2953
WIDTH : 580
HEIGHT : 580



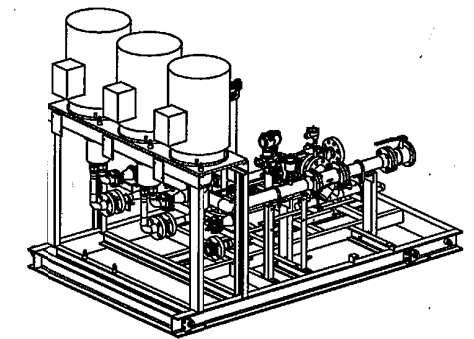
**FORWARD OUTER DIFFUSER
(REFERENCE GEM 0051)**
WEIGHT : 154 Kg
LENGTH : 533
WIDTH : 1998
HEIGHT : 1998



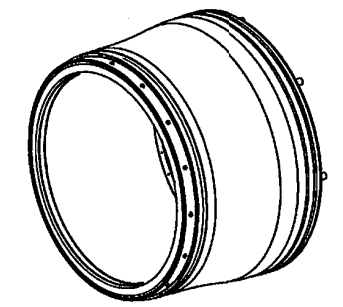
WATER WASH TANK
WEIGHT : 441 Kg
LENGTH : 1500
WIDTH : 1000
HEIGHT : 1400



SPREADER BEAM
WEIGHT : 340 Kg
LENGTH : 4780
WIDTH : 293
HEIGHT : 459



WATER INJECTION SKID
WEIGHT : 2321 Kg
LENGTH : 2800
WIDTH : 1800
HEIGHT : 2003



**FORWARD INNER DIFFUSER
(REFERENCE GEM 0051)**
WEIGHT : 142 Kg
LENGTH : 669
WIDTH : 1024
HEIGHT : 1024

UNIGRAPHICS DRAWING

STANDARD PRODUCT YES, SEE TA-78-2 NO

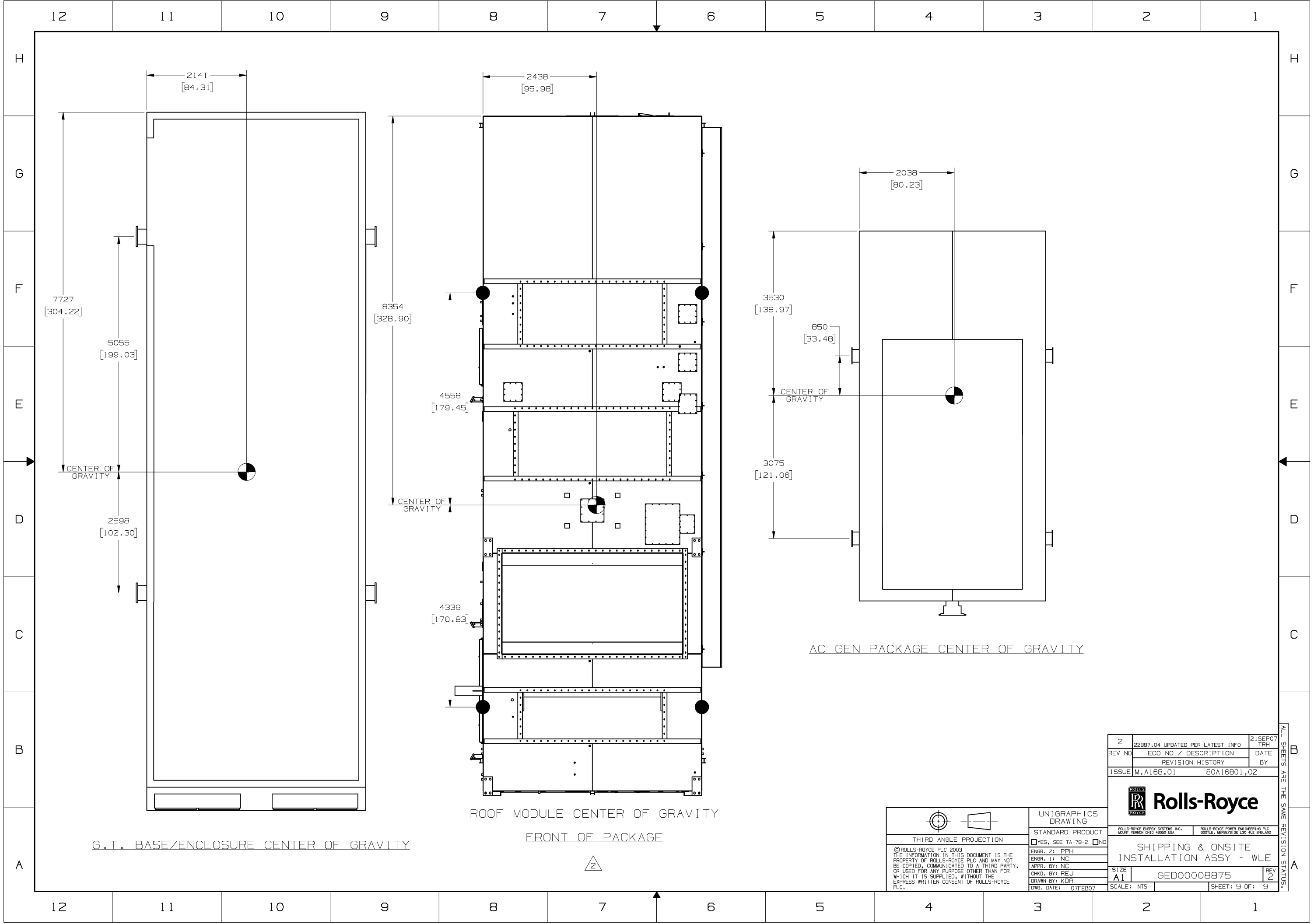
THIRD ANGLE PROJECTION

©ROLLS-ROYCE PLC 2003
THE INFORMATION IN THIS DOCUMENT IS THE PROPERTY OF ROLLS-ROYCE PLC AND MAY NOT BE COPIED, COMMUNICATED TO A THIRD PARTY, OR USED FOR ANY PURPOSE OTHER THAN FOR WHICH IT IS SUPPLIED, WITHOUT THE EXPRESS WRITTEN CONSENT OF ROLLS-ROYCE PLC.

ENGR. 21 PPH
ENGR. 11 NC
APPR. BY: NC
CHKD. BY: REJ
DRAWN BY: KDR
DWG. DATE: 07FEB07

2	22887.04 UPDATED PER LATEST INFO	21SEP07
1	22037.05 ADDED HP LIQUID FUEL SKID & WATER INJECTION SKID.	09FEB07
REV NO	ECO NO / DESCRIPTION	DATE
	REVISION HISTORY	BY
ISSUE M.A.168.01		80A16801.02
Rolls-Royce		
SHIPPING & ONSITE INSTALLATION ASSY - WLE		
SIZE	GED00008875	REV 2
SCALE: NTS	SHEET: 8 OF: 9	

ALL SHEETS ARE THE SAME REVISION STATUS.



Z	22887.04 UPDATED PER LATEST INFO	21SEP07
REV NO	ECO NO / DESCRIPTION	DATE
REVISION HISTORY		
ISSUE	M.A168.01	80A16801.02



THIRD ANGLE PROJECTION

©ROLLS-ROYCE PLC 2003
 THE INFORMATION IN THIS DOCUMENT IS THE PROPERTY OF ROLLS-ROYCE PLC AND MAY NOT BE COPIED, COMMUNICATED TO A THIRD PARTY, OR USED FOR ANY PURPOSE OTHER THAN FOR WHICH IT IS SUPPLIED, WITHOUT THE EXPRESS WRITTEN CONSENT OF ROLLS-ROYCE PLC.

UNIGRAPHICS DRAWING

STANDARD PRODUCT

YES, SEE TA-78-2 NO

ENGR. 2: PPH
 ENGR. 1: NC
 APPR. BY: REJ
 CHKD. BY: KDR
 DRAWN BY: KDR
 DWG. DATE: 07FEB07

ROLLS-ROYCE ENERGY SYSTEMS INC.
 MOUNT VERNON OHIO 43050 USA

ROLLS-ROYCE POWER ENGINEERING PLC
 BOULLE, MERSEYSIDE L30 4UZ ENGLAND

SHIPPING & ONSITE
 INSTALLATION ASSY - WLE

SIZE A1 GED00008875 REV 2

SCALE: NTS SHEET: 9 OF: 9

ALL SHEETS ARE THE SAME REVISION STATUS.